



European center for cars and spare parts



Rotterdam, your world-class port

The Port of Rotterdam is the ideal location for handling the import, export and distribution of cars and components. Important destinations on the European continent and in the UK, Ireland and Scandinavia, as well as the Iberian peninsula, can be reached quickly and safely from Rotterdam. Export of European-made cars and components benefits from the excellent connections offered by the port of Rotterdam.

BEST SERVICE

Rotterdam has dedicated car terminals in the Britanniëhaven with state-of-the-art facilities and high-quality tailor-made services. The terminals offer possibilities for carrying out inspections, installing parts and removing transport protection.

The Rotterdam Car Terminal offers storage space for 42,000 cars, 22,000 of which in 4 multi-storey car parks. It has an efficient double-decker train loading system. The terminal has a maximum capacity of 450,000 cars per year.

Besides cars, other RoRo cargo such as tractors and excavators are also handled at the terminal, for import and for export. All global car carriers regularly moor at the Rotterdam Car Terminal for distributors in Europe, as well as for export cargo; NYK, MOL, K-line, Wallenius/Wilhelmsen, Eukor, Nissan Marine Car Carriers and HOEGH. Unhindered

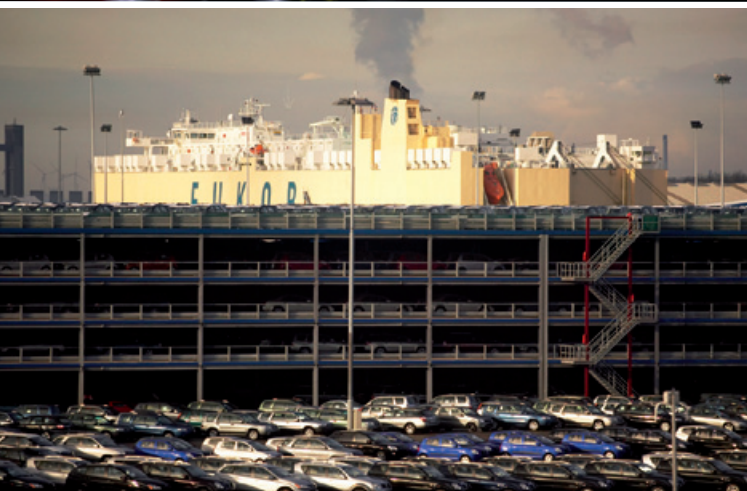
by locks, bridges or tides, incoming ships can berth within ninety minutes at the RoRo quay, where several vessels can be handled simultaneously.

ROTTERDAM CAR CENTER

The Rotterdam Car Center (RCC) offers a comprehensive range of value-adding services. The primary objective is to meet the needs of the client with a tailor-made package of services; here, cars are made ready to be sold and to be used.

Value-adding activities take place on 80% of all cars handled. A fully equipped high-tech body workshop specialises in damage repair to new cars, but also the refurbishment of used cars such as ex-rental and ex-lease cars. These services are among the most extensive and the most technically-advanced in the industry. For vehicle tracking and tracing

Rotterdam, your world-class port



prior to further shipment, RCC and RCT have developed sophisticated IT and wireless RFID solutions for precise car distribution management. The RFID-based system has a multitude of advantages for pre-delivery, documentation and stock administration, by processing data and handling Customs and fiscal formalities and taking care of European distribution using every mode of transport.

Both the Rotterdam Car Terminal and the Rotterdam Car Center are sister companies of the Broekman Automotive Division.

CKDS, ASSEMBLIES AND COMPONENTS

The handling of CKDs, assemblies and components is also in good hands in Rotterdam, Europe's number one container port. The Rotterdam Distriparks, three in total, offer the automotive industry all the facilities they need to optimally concentrate their European distribution activities.

ASSEMBLING SERVICES FOR THE AUTOMOTIVE INDUSTRY

In close co-operation with one of its leading customers, Store-Ship operates a production line for truck components like air suspension systems. Two shifts operating three machines manage to produce over 1,200 components per day. By assembling components at Store-Ship, customers can benefit from just-in-time delivery to European truck manufacturers and aftermarket. Activities such as fiscal representation, stock control of parts and components and testing of production are also included in this package. Store-Ship is a Broekman Logistics Division company.

HINTERLAND TRANSPORTATION

Around 50% of all cars arriving in Rotterdam are transported to their final destination by road trailers. Many haulage companies with modern double-deck trailers that offer tailor-made transport solutions are available in the port. Cars and spare parts are quickly and safely transported to their destination. A large volume of cars is transhipped via shortsea shipping after having undergone value adding services. Shuttle trains run non-stop to many international destinations.

PORT OF ROTTERDAM AUTHORITY

The aim of the Port of Rotterdam Authority is to enhance the port of Rotterdam's competitive position as a logistics hub and world-class industrial complex. Not only in terms of size, but also quality.

The core tasks of the Port Authority are to develop, manage and run the port in a sustainable way and to maintain a speedy and safe service for shipping.

FOR MORE INFORMATION, PLEASE CONTACT

Port of Rotterdam Authority

P.O. Box 6622

3002 AP Rotterdam, The Netherlands

T + 31 (0)10 252 12 58

F + 31 (0)10 252 40 87

E breakbulk@portofrotterdam.com

I www.portofrotterdam.com