

Port of Rotterdam authority



Working together towards world-class



The aim of the Port of Rotterdam Authority is to enhance the port of Rotterdam's competitive position as a logistics hub and world-class industrial complex. We manage, operate and develop the Rotterdam port and industrial area. And therefore, we invest in the development of new port sites, particularly Maasvlakte 2, in public infrastructure such as roads in the port area, and in customer-specific infrastructure such as quay walls and jetties. In order to handle shipping as effectively as possible, we are investing heavily in a traffic management system, traffic control centres and patrol vessels.

The Port Authority of Rotterdam lets out - on long-term leases - port sites to businesses, particularly to storage firms, cargo terminals and the chemical and petrochemical industry, including energy producers. The main sources of income are rents and harbour dues. Together with our partners we aim towards a multipurpose, sustainable, safe and attractive port that meets the high demands of society. The Port of Rotterdam Authority is an autonomous company with two shareholders, the municipality of Rotterdam and the Dutch state. Although publicly owned it is run like a commercial company.

MISSION AND STRATEGY

Our mission statement is:

"The Port of Rotterdam Authority develops, in partnership, the world-class European port".

VISION

Our vision is formulated as following: We continuously improve the port of Rotterdam, to make it the most efficient, safe and sustainable port in the world. We

create value for customers by developing logistical chains, networks and clusters. We do this in Europe as well as in growth markets worldwide. The Port Authority is an entrepreneurial port developer, and as such the partner for world-class customers in the following market segments: the petrochemical industry, energy (oil and gas), transport & logistics. In this way, we strengthen the competitive position of the Netherlands as a whole.

STRATEGY

Based on five strategic ambitions we describe how we aim to realize our vision:

Rotterdam Homebase & Showcase

The Port Authority will continue to do its utmost to develop Rotterdam's port and industrial complex as the most efficient, most sustainable and safest of its kind in the world.

Partnering with best in class customers

The Rotterdam Port Authority will strive, in the coming years, to develop even closer customer relationships at the

management level. These relationships are often international, contribute towards the development of Rotterdam, the positioning of the Port Authority in chains and networks, and towards achieving our international ambitions.

Be the entrepreneurial developer

In the past, the Port Authority took on new roles to improve the quality of the homebase. Examples include Portbase, the Traffic Management Company, Keyrail and property development. In the period ahead, the Port Authority will continue to create value for clients.

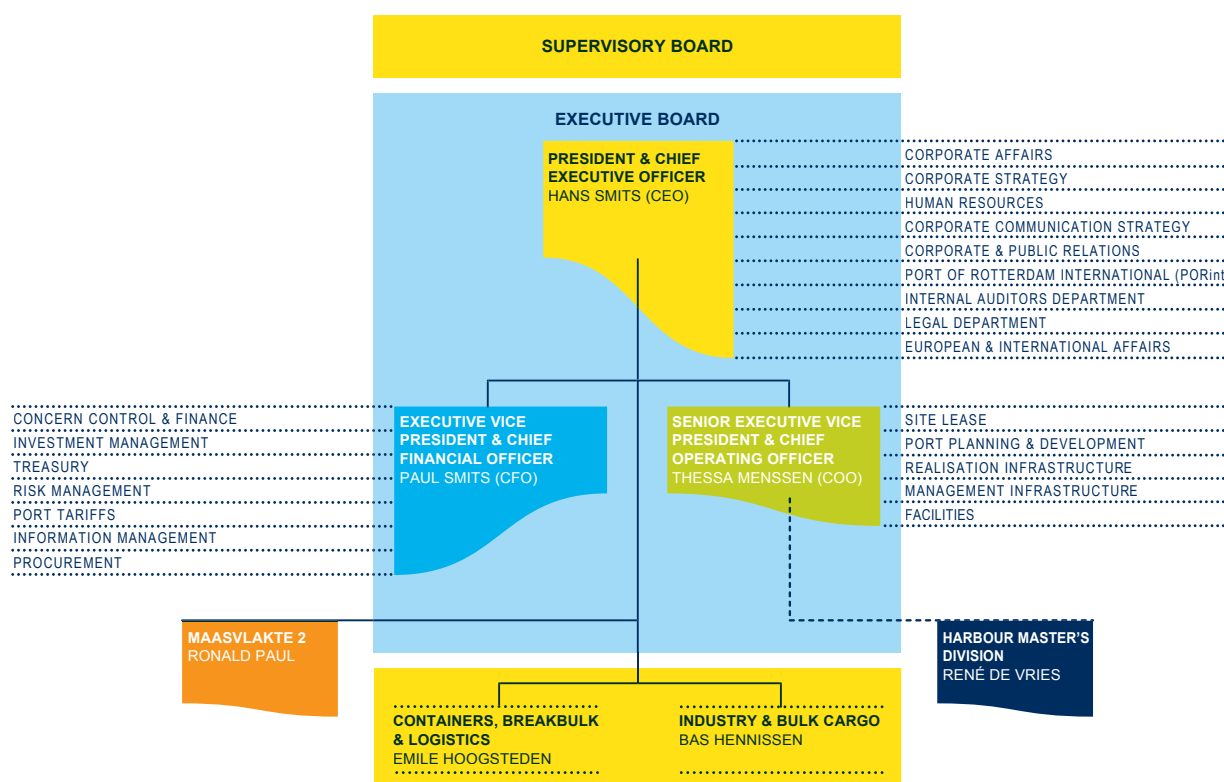
We do this by fleshing out new roles and taking on new tasks, mainly in connection with the construction and utilisation of infrastructure.

Creating value in logistical chains and networks

The Port Authority is to invest actively in strengthening the position of the port of Rotterdam in hinterland networks, maritime networks and the regional port network. We create added value for shippers and carriers by developing and optimising these chains and networks.

Connecting with growth markets

The Port Authority is known to be an enterprising port developer, which offers its clients business opportunities via participations in growth markets throughout the world. This allow us to strengthen our customer relationships. This is also very important for the development of the port of Rotterdam.



FACTS AND FIGURES FOR THE PORT AUTHORITY AND THE PORT OF ROTTERDAM

Port Authority: 1,200 employees, turnover approximately € 550 million.

Port area: approximately 26,000 acres (12,500 acres of which commercial sites, 13,500 acres water and rail lines, roads and pipeline zones). The port will be extended by Maasvlakte 2 with 20%. The length of the port area is approximately 40 km.

Direct employment: over 9,000 jobs.

Goods throughput: 430 million tonnes of goods a year.

Shipping: approx. 34,000 ocean-going vessels and 100,000 inland vessels annually.

FOR MORE INFORMATION, PLEASE CONTACT

Port of Rotterdam Authority

P.O. Box 6622

3002 AP Rotterdam

T + 31 (0)10 252 10 10

F + 31 (0)10 252 10 20

E info@portofrotterdam.com

I www.portofrotterdam.com

Visiting address

World Port Center

Wilhelminakade 909

3072 AP Rotterdam

Port number 1247

Follow Port of Rotterdam Authority:



(via www.portofrotterdam.com)