

---

# THE WORLD'S SMARTEST PORT. BOUNDLESS AMBITION. MAKE IT HAPPEN.

---



When it comes to great ideas, it does not matter who owns them or where they come from. When it comes to great ideas, what matters is where you take them and where they take you.

At the Port of Rotterdam Authority 1,100 passionate professionals are developing and implementing ideas to take the port forward today and tomorrow. With the ultimate goal of building Europe's smartest, most sustainable and best connected logistics hub, where (inter)national businesses can settle and grow.

To this end, the Port Authority develops and allocates port sites. At the same time it is responsible for ensuring a safe, smooth, clean and secure operation of the port. As a result, the Port Authority offers businesses everything they need for safe, efficient transshipment and production of goods and raw materials, while constantly focusing on the quality of the working and living environment.

At the Rotterdam Port Authority, passionate people are realising boundless ambitions. Together they are building the world's smartest port.

## OUR MISSION

The Port of Rotterdam Authority creates economic and social value by working with customers and stakeholders to achieve sustainable growth in the world-class port.

## VISION

We continually improve the port of Rotterdam to make it the safest, most efficient and most sustainable port in the world. We create value for our customers by developing logistics chains, networks and clusters, in both Europe and growth markets worldwide. As an enterprising port developer, the Port Authority is the partner for world-class clients. In this way, we are also strengthening the competitive position of the Netherlands.

## OUR STRATEGY

The port of Rotterdam is of great value to the regional, national and European economies and must remain so in the future. This is not something that should be taken for granted, because developments in the fields of logistics, energy and information technology follow one another in rapid succession. Together with our partners (customers and governments) we must continue to actively work towards creating added value through making the move to a future-proof port economy. In this context, our emphasis is on the transition to clean energy and digitisation of logistics processes. That is why the Port Authority focuses on new

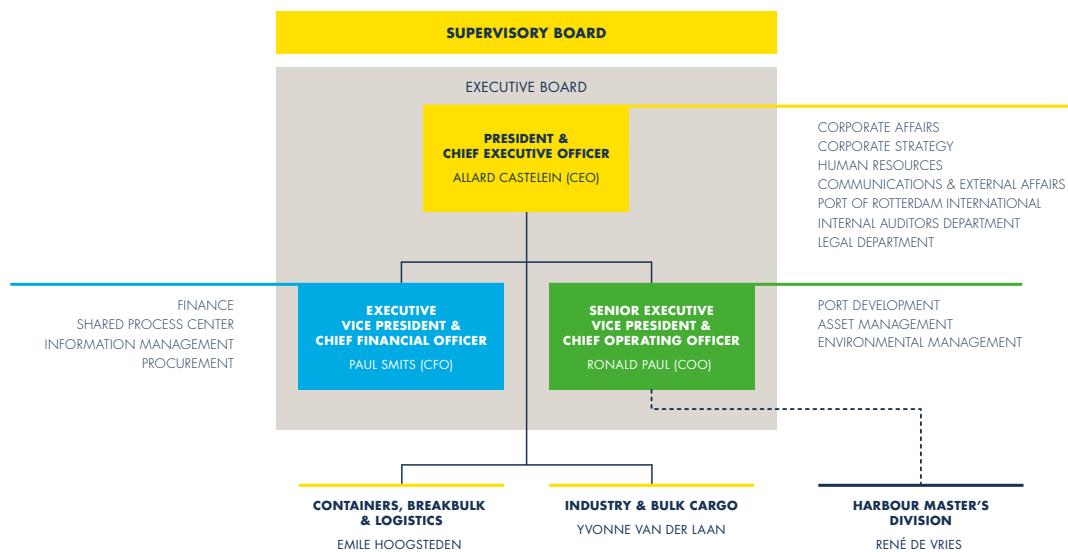
growth markets, such as the bio-based and offshore industries. At the same time we invest in existing growth markets (including containers). And in mature markets where the port is already market leader, such as the cluster of petrochemical companies.

The Port of Rotterdam Authority is committed to creating a dynamic port area with excellent business conditions for existing and new customers. We invest in overarching infrastructure (energy, transport, utilities, data) for a sustainable and competitive industrial cluster in the port. In addition, we work at further increasing the efficiency of sea, inter-terminal and hinterland transport and the connectivity of hinterland connections. And we are dedicated to developing sustainable and efficient chains, clusters and modalities. We play an active role in the development of data and data applications in these chains.

Creating an excellent climate for innovation and for developing new concepts together with our customers is one of our top priorities. Further increasing the port's service level for our customers is crucial – such as the level of nautical services and of supporting customers in the fields of obtaining permits, procedures, enforcement and supervision. On top of that, we further develop available space through restructuring and modernising, while ensuring the port remains accessible and will be able to grow without causing irreparable damage to nature. Finally, the Port Authority expands its network by entering into partnerships with international ports in markets that are of strategic importance to Rotterdam.

## FACTS AND FIGURES

**Port of Rotterdam Authority:** 1,100 employees, turnover approx. € 670 million. **Port area:** approx. 12,500 hectares (land & water) of which 6,000 hectares are commercial sites. The port area is approx. 40 kilometres long. **Employment:** over 180,000 jobs. **Goods throughput:** about 470 million tonnes of goods a year. **Shipping:** approx. 30,000 seagoing vessels and 110,000 inland vessels a year.



## More information

Port of Rotterdam Authority • P.O. Box 6622 • 3002 AP Rotterdam • +31 (0)10 252 1010 • [info@portofrotterdam.com](mailto:info@portofrotterdam.com)