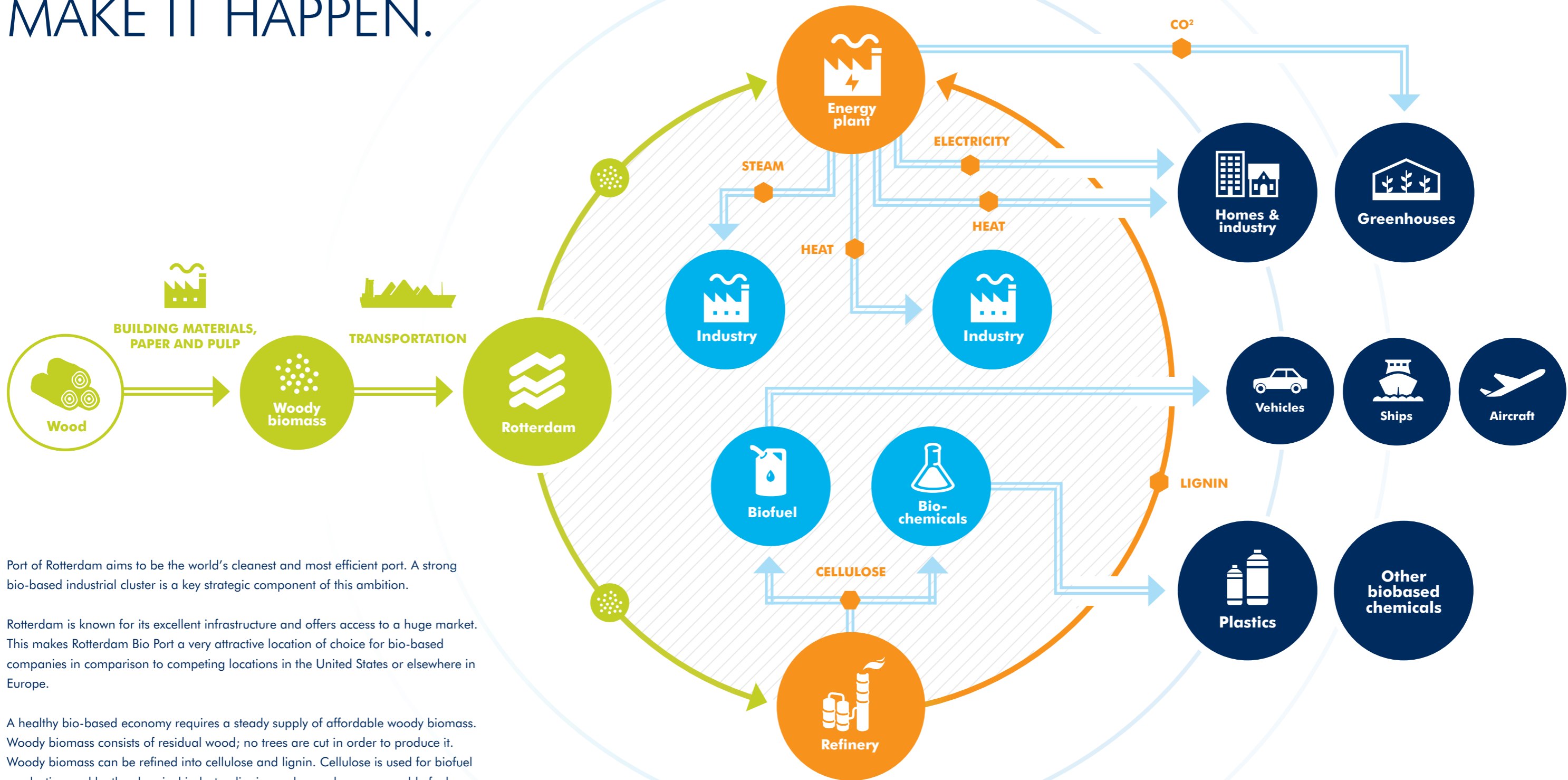


# TODAY 'S ENERGY TO FUEL THE FUTURE. MAKE IT HAPPEN.



Port of Rotterdam aims to be the world's cleanest and most efficient port. A strong bio-based industrial cluster is a key strategic component of this ambition.

Rotterdam is known for its excellent infrastructure and offers access to a huge market. This makes Rotterdam Bio Port a very attractive location of choice for bio-based companies in comparison to competing locations in the United States or elsewhere in Europe.

A healthy bio-based economy requires a steady supply of affordable woody biomass. Woody biomass consists of residual wood; no trees are cut in order to produce it. Woody biomass can be refined into cellulose and lignin. Cellulose is used for biofuel production and by the chemical industry; lignin can be used as a renewable fuel source for existing energy plants.

Using both lignin and cellulose ensures that woody biomass, as a whole, remains available as well as affordable. This gives a short-term boost and a long-term positive impulse to the sustainable future of our port and economy.