

NEWSLETTER

PRINCESS ALEXIA VIADUCT

Edition 5, mei 2026 | English newsletter

[Go behind the scenes at the 'Dag van de Bouw' on Saturday 20 June!](#)

On Saturday 20 June, we're throwing the construction fences wide open for a unique look behind the scenes of the Prinses Alexiaviaduct. Between 10am and 3pm, you're welcome to discover this impressive project yourself – an ideal opportunity to observe how this massive structure is gradually taking shape.

DAG VAN DE BOUW

Combine the Dag van de Bouw with a Portlantis discount

Turn your visit to the Dag van de Bouw into a day out! A site visit in the morning, followed by a wonderful afternoon exploring Portlantis. Learn about all the fun activities and enter for a chance to win 4 free tickets to Portlantis at our project location. For readers of this newsletter, we can also offer you a unique discount. Read on to find out more.

Discover Portlantis, an inspiring day out

Portlantis, the experience centre on Maasvlakte 2 takes you on an exciting journey through the port of Rotterdam! Discover how the port works, what it means to our daily lives and what the future of the port looks like.

Experience the port in surprising ways. You'll embark on your journey of discovery with the help of augmented reality, interactive games, and a spectacular attraction. Can't get enough of the port? Go on a coach tour or boat trip with a (Dutch-speaking) guide. Feeling peckish? Then head to our restaurant on the 4th floor, where you can enjoy a stunning view of the port, industry and North Sea, along with a diverse menu.



© Ossip van Duivenbode

Discount on admission tickets to Portlantis

To celebrate the Dag van de Bouw and as a reader of this newsletter, you get a **50% discount** on admission tickets for Portlantis. Use the following discount code: **BOUW50**. The code is valid for up to five people and is only valid for a visit on **20 June 2026**. Book your tickets in advance at: www.portlantis.nl. Enter the code in the field 'Kortingscode ingeven' (Enter discount code). The discount will be automatically deducted.

Adress Portlantis: Prinses Máximaweg 301, 3199 KG Maasvlakte Rotterdam
Port number 8804

View on the progress of the Prinses Alexiaviaduct



Every quarter, BAM Infra uses a drone to take images of the progress of the construction of the Prinses Alexiaviaduct from the air. The images are rapidly changing. The photo on the left was taken in March and the photo on the right shows the fully poured concrete for deck 3. Later on in this newsletter, we share a video about this milestone.

Timelapse shows the growth of the Prinses Alexiaviaduct

It's always fascinating to see a large infrastructure project take shape step by step – and this time you can watch it unfold in a matter of minutes. We've created a compilation of timelapse videos of the construction of the Prinses Alexiaviaduct, from the initial preparatory works to the current phase. The timelapse is not only an interesting look behind the scenes but also a tangible reminder of the massive progress made within the project in recent months.

Watch the timelapse compilation [here](#) and see the construction come to life at full throttle!



Spotlight on the pouring of deck 3



In March, we reached another milestone: the pouring of deck 3 of the Prinses Alexiaviaduct. This is the deck that runs over ProRail's Port Railway Line and is therefore a crucial element of the viaduct. We previously already poured the deck over the Maasvlakteweg (deck 2). The final deck (deck 1) will be poured in quarter 3. This deck covers the industrial pipeline corridor and forms the connection to the Prinses Máximaweg.

In a short video, Steven de Mos, Construction Manager at the Port of Rotterdam Authority takes you behind the scenes of this unique construction project on the Maasvlakte.

Watch the video and discover how deck 3 was constructed.
[Concrete pouring Prinses Alexiaviaduct.mp4](#)



End result after removing formwork

Changes to road phase: traffic passes under new viaduct

In March, the road phase of the Prinses Alexiaviaduct was changed. The road traffic will now drive on the newly laid main road on the right side of the Maasvlakteweg and will then pass under the newly poured viaduct deck.



Following this phase shift, we removed the existing bypass. This space will be needed to house a construction site for the next phase: the laying of the third and final deck of the viaduct, which will run over the industrial pipeline corridor and connect to the Prinses Máximaweg.

Works in this period

- Pouring deck 1 over the industrial pipeline corridor
- In week 17, we began laying the groundwork for the construction of the cycling path Mekongweg (between hectometre posts 13.8 and 12.3) and laying the paving.
- We continue to work on the various elements, such as the western pipeline crossing, completing the railway viaduct, and the earth retaining structures for the northwestern exit and southwestern entrance.



Building of earth retaining structure on the side with the Maasvlakte beach

Grounding prepares the Prinses Alexiaviaduct for the future

Under the Prinses Alexiaviaduct is a freight line that has not yet been electrified. However, in the construction of the viaduct, the possible future electrification of the line has been taken into consideration. This involves a special grounding network: a system of conductive connections that ensure that metal parts have the same electrical potential as the earth. This will prevent hazardous voltage differences when overhead lines are later installed.

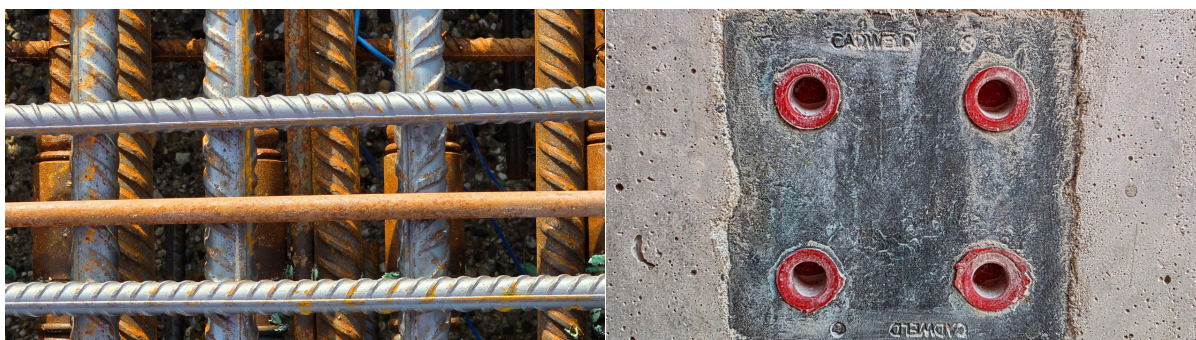


Photo caption: A Cadweld grounding point is a fixed measurement and connection point for grounding in the earth. It is used to safely connect grounding (like ground wires or ground plates) and to allow measurements and inspections to take place.

An electrified track can create stray currents that can cause damage to reinforcements or structural components. That is why structures above the tracks always include grounding to prevent corrosion and electrical hazards. By already incorporating this into the construction, the viaduct will be safe and future proof once the freight line is electrified in the coming years.

A smart bit of engineering that you can't see but ensures that the Prinses Alexiaviaduct is prepared for a future with modern and sustainable freight transport in the port.

How can I stay informed?

- Phone number **088 7123 505** is available 24/7 for questions.
- For general information on the project: [Linda Vervooren](#), environment manager Port of Rotterdam Authority, +31 (0)6 16 58 84 69.
- Emergencies: call 112.