



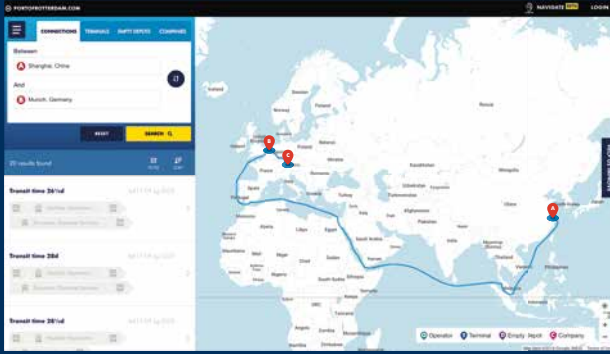
Navigate Enterprise

Enhance the ease of doing business in your port.

Shippers, carriers, forwarders, agents and others that make use of your port require a wide range of facilities and supporting services. Navigate Enterprise is a comprehensive online platform that puts your port's entire network of connections, depots, terminals and other facilities and services at the fingertips of all those that make use of your port. The tool lets users compare various connections, modalities and necessary services to and from your port and plan the optimal cargo routes accordingly.

Why choose Navigate Enterprise?

- **Navigate Enterprise greatly enhances the ease of doing business for all port users.** It is an open platform that increases transparency throughout the chain and enables a port's clients to access the entire network and services.
- **Navigate Enterprise helps ports and port service providers improve their service level.** The platform offers an integrated analytics dashboard that provides user insights that facilitate effective marketing and commercial efforts. Additionally, it provides information that helps improve port operations.
- **Navigate Enterprise is future proof.** Navigate is a world-class solution, developed for ports that have the ambition to grow and be among the highest rated ports in their region. The tool has already proven itself in the Port of Rotterdam and is continually being improved – to the benefit of any port using it, without need for further investments.

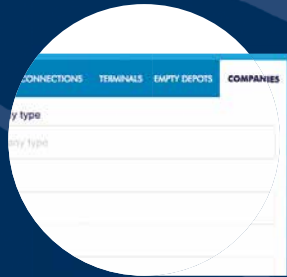


Navigate Enterprise lets port users tap into the entire port network and all available services.

1. Navigate Enterprise is cloud based and offers information about your port on a global scale. It comes installed with data sets that are specifically customized for your port and your region.
2. The platform can be integrated into your existing website. This gives users easy access to the platform from any pc or mobile device.

Deepsea A

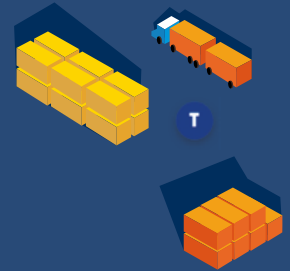
3. Navigate Enterprise offers users a complete overview of all the connections, options and additional services your port network provides. Users can search, browse and compare cargo routes and see which modalities are available (train, truck, barge) using extensive search and filter options.



Port B

BCTN Den Bosch
3,6 km from location

4. Navigate Enterprise will also give an indication of the duration of each leg of the journey, from any point in the world, to and from your port by sea and over land.



5. Users can select the most suitable option based on their own criteria like preferred modalities, transit time or CO2 emissions. Of course, more information or a quotation can be requested with just a few clicks of the mouse.

Hinterland C



Analytics dashboard

6. Additionally, Navigate Enterprise offers extensive analysis tools and dashboards with relevant user data.

Contact us if you'd like to hear more:



Monica Swanson

Commercial Lead Digital Business Solutions
Port of Rotterdam International
ma.swanson@portofrotterdam.com



Chantal Gouka

Business Lead
Digital Business Solutions
c.gouka@portofrotterdam.com